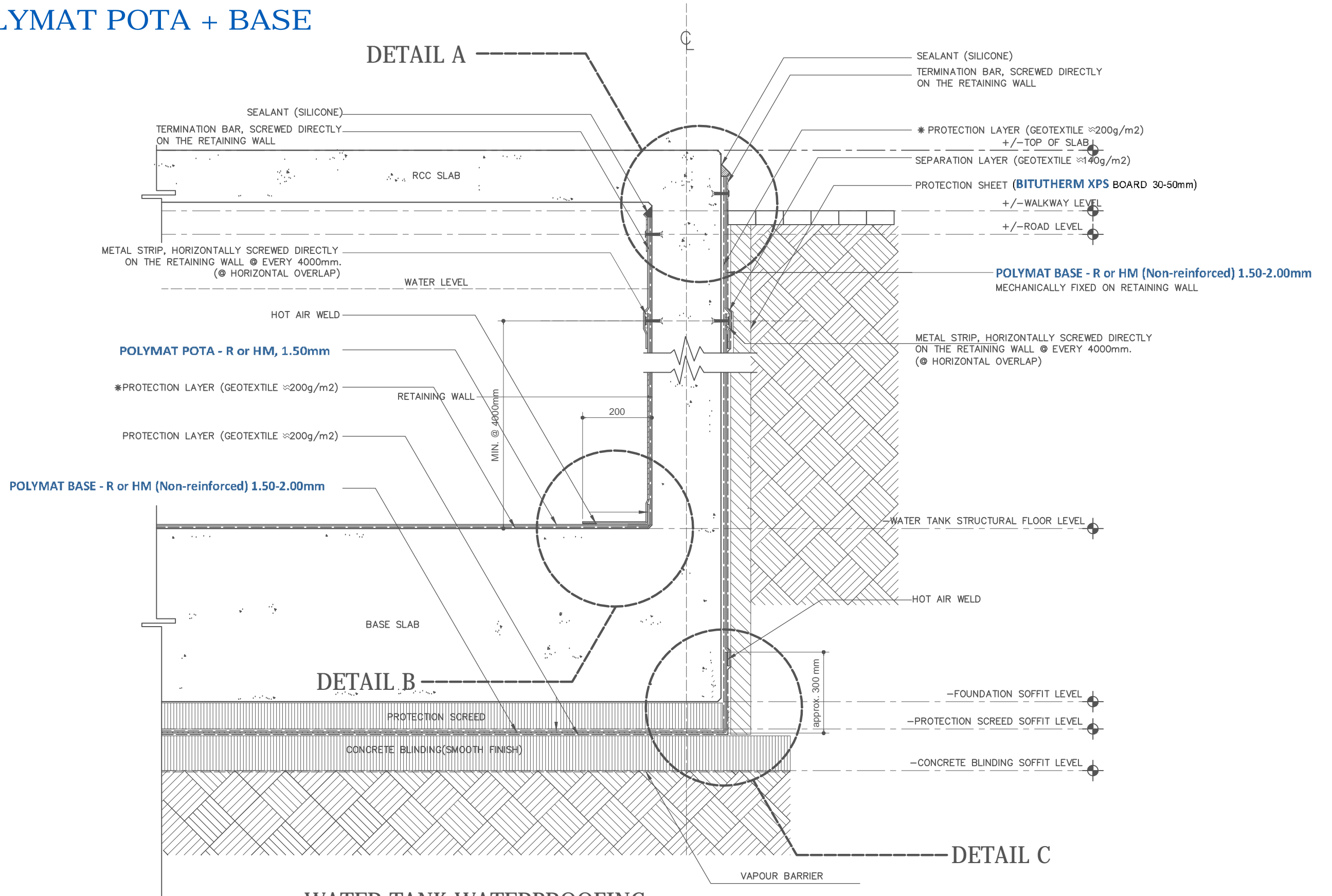


POLYMAT POTA + BASE



NOTE: OPTIONAL
 * PROTECTION LAYER (GEOTEXTILE 200g/m²) IS RECOMMENDED FOR ROUGH AND UNEVEN SURFACE FINISH. OTHERWISE, THE PVC MEMBRANE CAN BE DIRECTLY APPLIED ON THE SUBSTRATE SURFACE.

WATER TANK WATERPROOFING

REMARKS	REVISION		DRAWN BY :	DWG. No.
	0.0	DATE :		
			CHECKED BY :	MS.05.01-01
			DATE :	
			REF. NO.	